

TABLE OF CONTENTS



Safety Notices	1
Introduction	3
Setup	5
PC Tool - First Time Use	5
Downloading Data	7
Configuring PC Tool For Download From Control Point	7
Downloading Truck Data From Control Point To PC	8
Reports	12
Report Formats	14
Report Options	16
Report Generator	17

SAFETY NOTICES

Safety notices are one of the primary ways to call attention to potential hazards.



This Safety Alert Symbol identifies important safety messages in this manual. When you see this symbol, carefully read the message that follows. Be alert to the possibility of personal injury or death.

⚠ WARNING

Use of the word **WARNING** indicates a potentially hazardous situation which, if not avoided, could result in death or serious injury.

⚠ CAUTION

Use of the word **CAUTION** with the Safety Alert Symbol indicates a potentially hazardous situation which, if not avoided, may result in minor or moderate injury.

CAUTION

Use of the word **CAUTION** without the safety alert symbol indicates a potentially hazardous situation which, if not avoided, may result in equipment damage.

OPERATOR'S MANUAL



INTRODUCTION

The DARTPAD is an easy-to-use device used for retrieving truck data from a Control Point console.

Simply, connect the DARTPAD to the RS-232 port of the Control Point and select Control Point Attached to start the download. In just a few minutes the download is complete. The data is then viewable on the DARTPAD.

Data collected for records includes:

- Quantity of granular and liquid material dispensed during spreading operation.
- Total vehicle KM driven and KM spreading granular and liquid materials.
- Application rates selected while spreading granular and liquid materials were spread.
- Time and data records indicating when granular and liquid materials were spread.
- Alarm history that includes when the control system operated in an error condition.

This manual provides instruction for the use of the DARTPAD and the djDART[®] PC Tool for the following activities:

- Downloading truck data directly from the Control Point console to the DARTPAD
- Automatic report generation

OPERATOR'S MANUAL



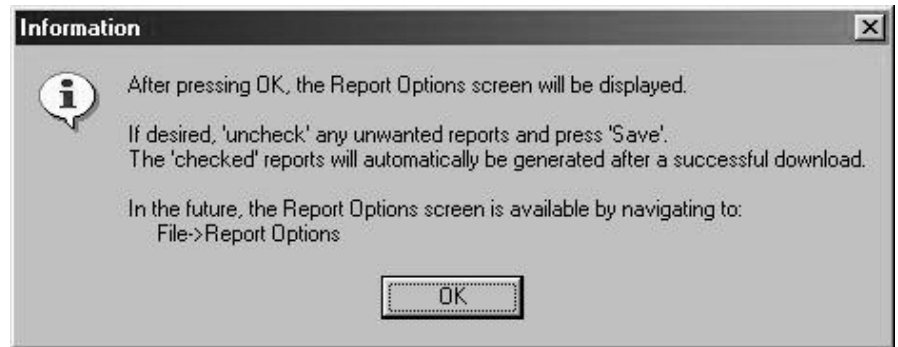
PC TOOL - FIRST TIME USE

One enhancement of the PC Tool version 3.0 is the automatic generation of reports after the successful download of truck data files. Upon initial use, the PC Tool will:

1. Request a selection be made regarding report generation.

Figure 4

Information Screen

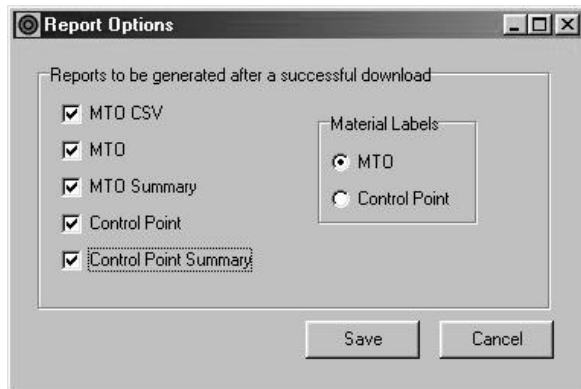


2. Prompt the user for report generation selection.

NOTE: If specific report options are not selected, **ALL** reports will be generated after the successful download of truck data files.

Figure 5

Report Options Screen



Users typically select all "MTO" reports **OR** all "Control Point" reports. For additional information, refer to REPORT OPTIONS.

OPERATOR'S MANUAL



CONFIGURING PC TOOL FOR DOWNLOAD FROM CONTROL POINT

The following steps are performed to display and alter season accumulators after each download of truck data.

1. Start the PC Tool.
2. Select CONTROL POINT ATTACHED>OPTION on the PC Tool.

Figure 22

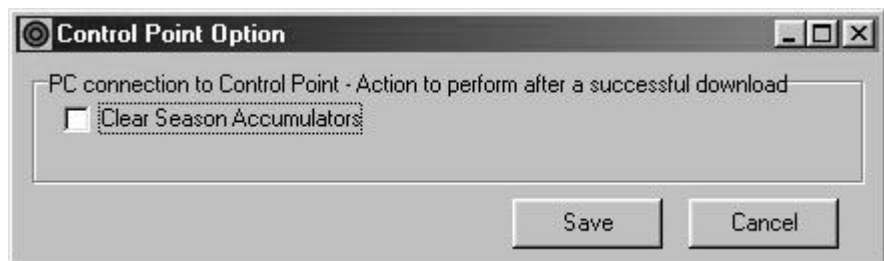
Control Point Attached: Option



3. The current configuration will be displayed.

Figure 23

Control Point Option



NOTE: Clearing the Clear Season Accumulations is permanent. This should be done only at the end of the season after a successful download.

The Control Point Options window states *PC connection to Control Point - Action to perform after a successful download*

- Select the box marked CLEAR SEASON ACCUMULATORS to clear data after the successful download.
- Do not select the box if data is to remain on the Control Point console.

Once the appropriate option is selected, select SAVE. These options will remain standards for future Control Point connections.

4. If changes are not necessary, select the "X" button (upper right corner) or select CANCEL to lose the window.

DOWNLOADING TRUCK DATA FROM CONTROL POINT TO DARTPAD

The following steps are performed to download truck data from the Control Point to the DARTPAD.

1. Connect the USB to RS-232 cable in the port Labeled 2 on the DARTPAD.
2. Connect one end of the NULL cable to the RS-232 connector on the Control Point harness.
3. Ensure the Control Point Console is powered on in the truck.
4. Double click on the icon djDART PC Tool on the desktop.
5. Click on the Control Point Attached on the menu bar.
6. Click on Get Truck Data.

Figure 24

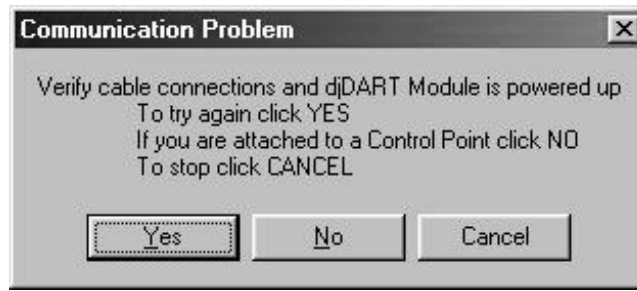
Control Point PC Tool



4. If the BULLSEYE is selected when connected to a Control Point console, a box will appear asking if the user is connected to a DART or a Control Point. Select NO to re-initialize with the Control Point console.

Figure 25

Communication Problem



5. A directory with the current date is displayed, indicating the default directory where raw (*.csv) truck files and generate reports (*.xls) are stored. If that directory doesn't exist (typical with a first download) a prompt will appear indicating the need for creation. Select YES to create and use the default directory.

Figure 26

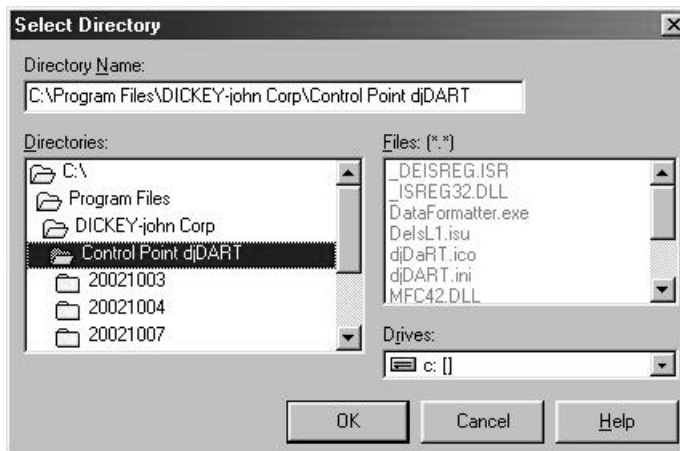
Confirm Default Directory



6. If NO is selected; a prompt will appear requesting a directory location. Select the appropriate directory, verify the name displays correctly, and select OK.

Figure 27

Select Directory



7. The PC Tool will download truck data from the Control Point console and generate the report(s) as identified under FILE>REPORT OPTIONS.
8. If there are no additional operations to perform, select FILE>EXIT to close the PC Tool.



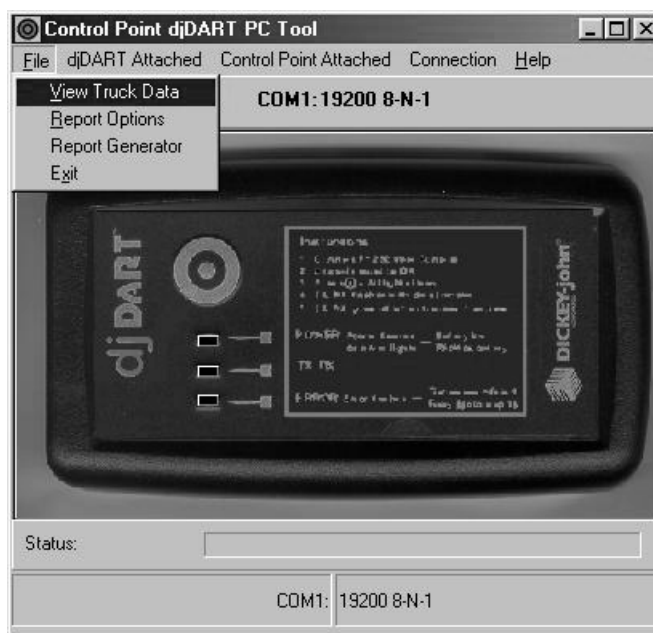
REPORTS

The following steps are performed to view generated reports from truck data downloaded from the DARTPAD.

1. Start the PC Tool
2. Select FILE>VIEW TRUCK DATA

Figure 28

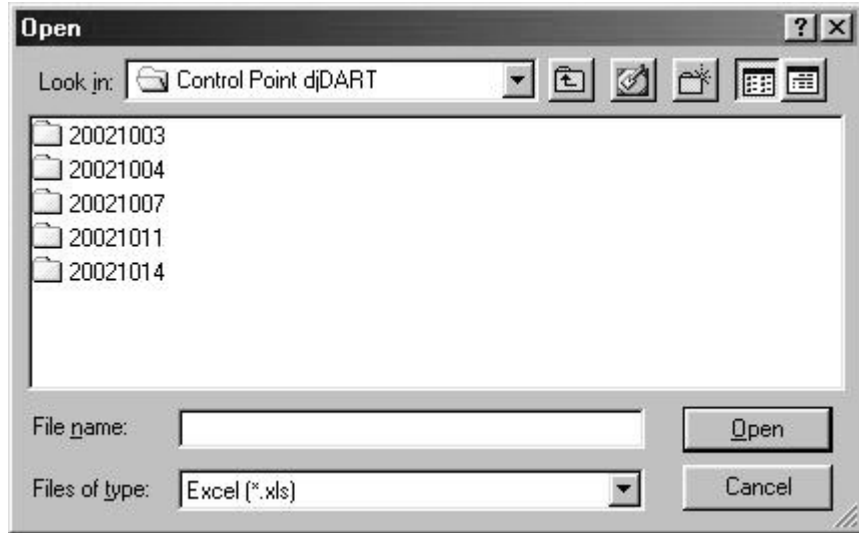
View Truck Data



3. A prompt will be displayed, requesting the file to be viewed.

Figure 29

File View

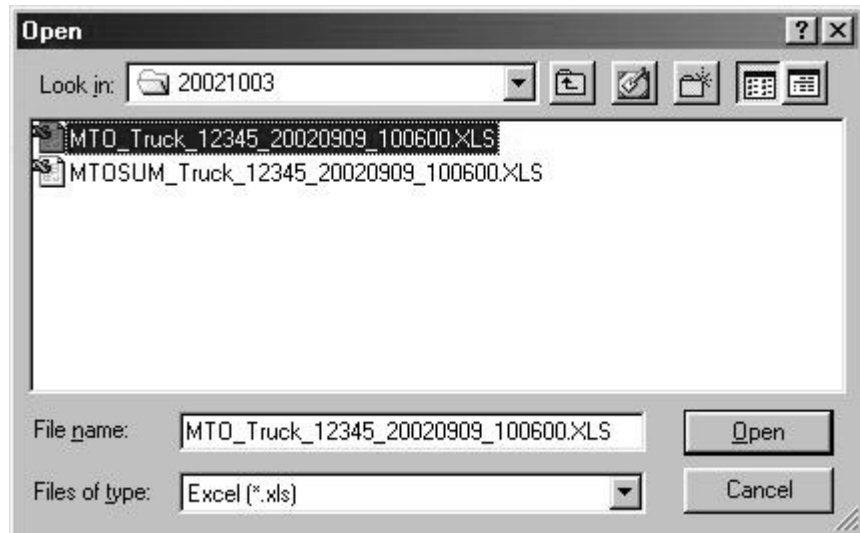


4. Select the desired report and select OPEN.

Figure 30

Open File

NOTE: Microsoft Excel Viewer 97 is used by the DARTPAD to view the reports.



5. The report will open in Microsoft Excel Viewer 97 (*.xls).

REPORT FORMATS

NOTE: An "" indicates text not shown since it can vary based on the Truck ID and the date and time on the Control Point console.*

Upon successful download from the DARTPAD, the "Raw" truck data and report(s) are generated in the designated download directory. For example, if the PC Tool was used and truck data downloaded directly from the DARTPAD (Truck ID 001) on October 4, 2002, at 12:32 p.m., the following file would be created:

"Raw" file(s)	
File Name	Example
Truck_*.CSV	Truck_001-20021004_123200.CSV

The "Raw" file always follows the format: Truck_<Truck ID>_<Date>_<Time>.CSV

OPERATOR'S MANUAL



NOTE: *The Date and Time are the Control Point console date and time when the data was downloaded, not the current PC date and time.*

One or more of the following reports will also exist:

Generated Report(s)	
File Name	Example
MTO_*.CSV	MTO_Truck_001_20021004_123200.CSV
MTO_*.XLS	MTO_Truck_001_20021004_123200.XLS
MTOSUM_*.CSV	MTOSUM_Truck_001_20021004)123200.XLS
CP_*.XLS	CP_Truck_001-20021004_123200.XLS
CPSUM_*.XLS	CPSUM_Truck_001_20021004)123200.XLS

The generated report files always follow the format: <Report Type>_Truck_<Truck ID>_<Date>_<Time>.<File Format>

All files with the prefix "MTO" or "MTOSUM" are specific to the requirements provided by the Ministry of Transportation Ontario (MTO).

Generated Reports	
File Name	Description
MTO*.CSV	Used for official reporting purposes
MTO*.XLS	Microsoft Excel compatible view of MTO*.CSV
MTOSUM*.CSV	Microsoft Excel compatible summary of MTO*.CSV

All files with the prefix "CP" or "CPSUM" are formatted "Raw" Control Point files.

Generated Reports	
File Name	Description
CP*.XLS	Microsoft Excel compatible chronological event based formatted view of the "Raw" truck file (*.CSV).
DPSUM*.XLS	Microsoft Excel compatible summary view of "CP" file.

REPORT OPTIONS

NOTE: The Material Labels selection is only available for "MTO" reports. This selection determines whether the MTO defined labels or the labels within the Control Point console are used in the generated reports. For most cases, the default "MTO" selection should be used.

The following steps are performed to configure report generation after a successful download.

1. Start the PC Tool
2. Select FILE>REPORT OPTIONS

Figure 32

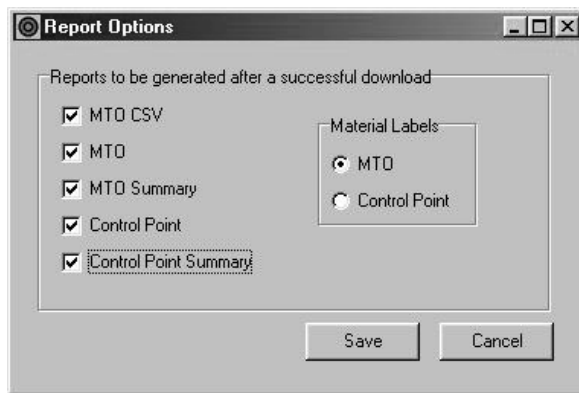
Report Options



3. Select the report(s) to be generated.

Figure 33

Report Options Menu



4. Select SAVE after selections are made.

NOTE: The Material Labels selection is only available for "MTO" reports. This selection determines whether the MTO defined labels or the labels within the Control Point console are used in the generated reports. For most cases, the default "MTO" selection should be used.

REPORT GENERATOR

Occasions may occur when different reports must be generated and the only source is the "Raw" file. To accomplish this, use the Report Generator utility. The following steps are performed to generate reports using this utility.

1. Start the PC Tool
2. Select FILE>REPORT GENERATOR

Figure 34

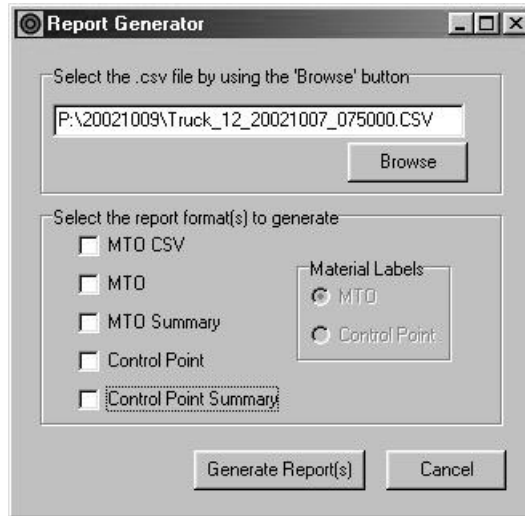
Report Generator



3. Select BROWSE to access the "Raw" truck file. Navigate to the appropriate file. This file **MUST** be a Truck_*.CSV file (i.e., Truck_1_20021004_123200.CSV).

Figure 35

Report Generator Menu



4. Select the report(s) to be generated.
5. Select GENERATE REPORT(S).
6. The selected reports will be generated.
7. Once all desired operations have been performed, select FILE>EXIT to close the PC Tool.

OPERATOR'S MANUAL



Champion Industrial Equipment **WARRANTY**

Champion Industrial Equipment warrants to the original purchaser for use that, if any part of the product proves to be defective in material or workmanship within one year from date of original date of sale, and is returned prepaid to Champion Industrial Equipment within 30 days after such defect is discovered, Champion Industrial Equipment will (at our option) either replace or repair said part. This warranty does not apply to damage resulting from misuse, neglect, accident, or improper installation or maintenance. Said part will not be considered defective if it substantially fulfills the performance expectations. THE FOREGOING WARRANTY IS EXCLUSIVE AND IN LIEU OF ALL OTHER WARRANTIES OF MERCHANTABILITY, FITNESS FOR PURPOSE, AND OF ANY OTHER TYPE, WHETHER EXPRESS OR IMPLIED. Champion Industrial Equipment neither assumes nor authorizes anyone to assume for it any other obligation or liability in connection with said part and will not be liable for consequential damages. Purchaser accepts these terms and warranty limitations unless the product is returned prepaid within fifteen days for full refund of purchase price.

**For Champion Industrial Equipment Service Department,
call 1-613-938-2900**



2855 Marleau Avenue, Suite A, Cornwall, Ontario K6H 7B6
Tel: 613 938-2900 Fax: 613 938-8219
www.cie-eic.com