

INSTALLATION INSTRUCTIONS



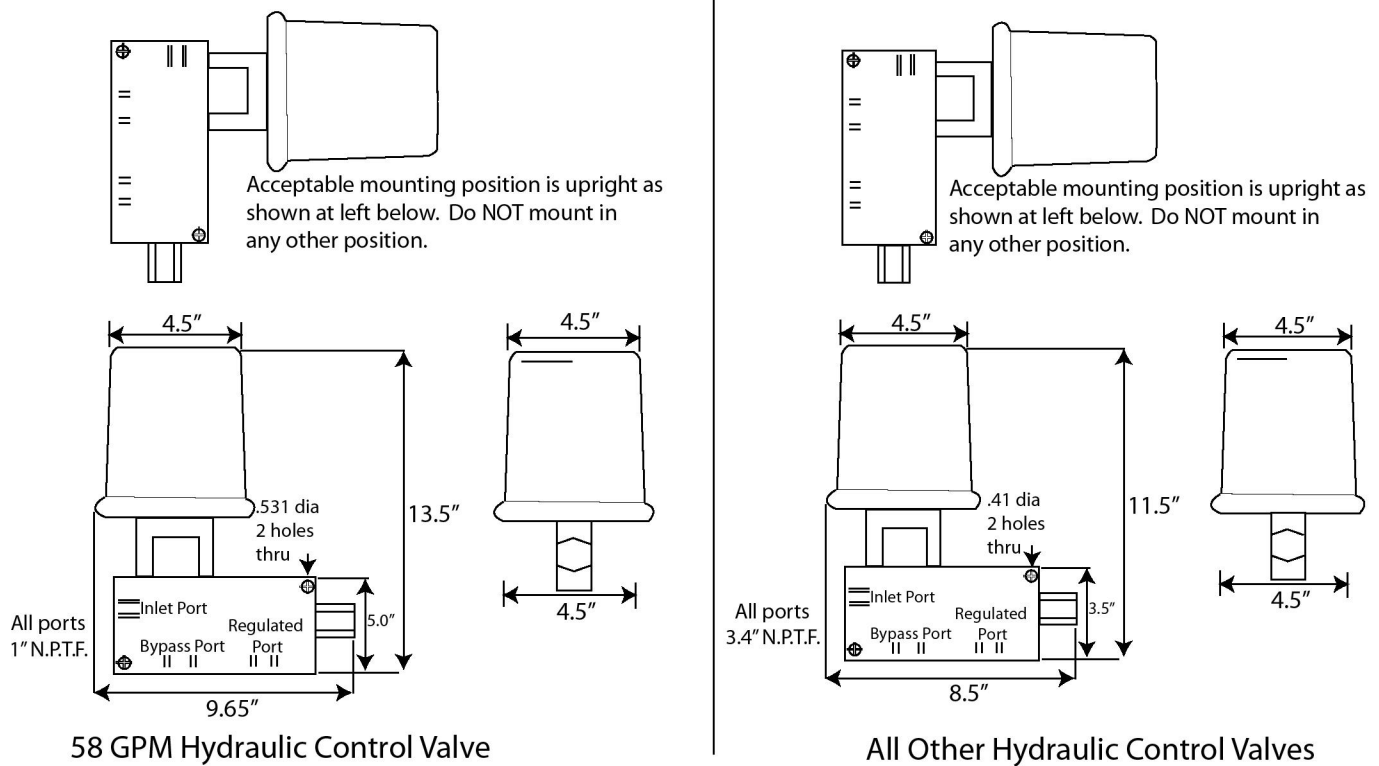
HYDRAULIC CONTROL VALVE

The hydraulic control valve can mount in any location that is protected from abusive environmental conditions. Mounting position recommendations noted in Figure 1.

IMPORTANT: After mounting, the valve, mounting brackets, and bolts should be coated with oil, grease, or paint to provide an oxidation barrier.

Figure 1

Control Valve Dimensions for 58 GPM and all other Valves



- Hydraulic hose requires a minimum operating rating of 2250 psi working.
- Hydraulic control valve ports are threaded.
- Use the hose manufacturer's recommended fittings.

CAUTION

Avoid sharp bends when installing hoses to avoid damage during spreader operation.

INSTALLATION INSTRUCTIONS



CONNECTION

Connect the hydraulic control valve into system following the appropriate illustration. Verify control lines conform to standard hydraulic practice for flow rates and that a 10-micron filter is installed in the suction line.

IMPORTANT: Always use a thread sealant on male fittings.

Figure 2

Fixed Displacement Hydraulic Pump System

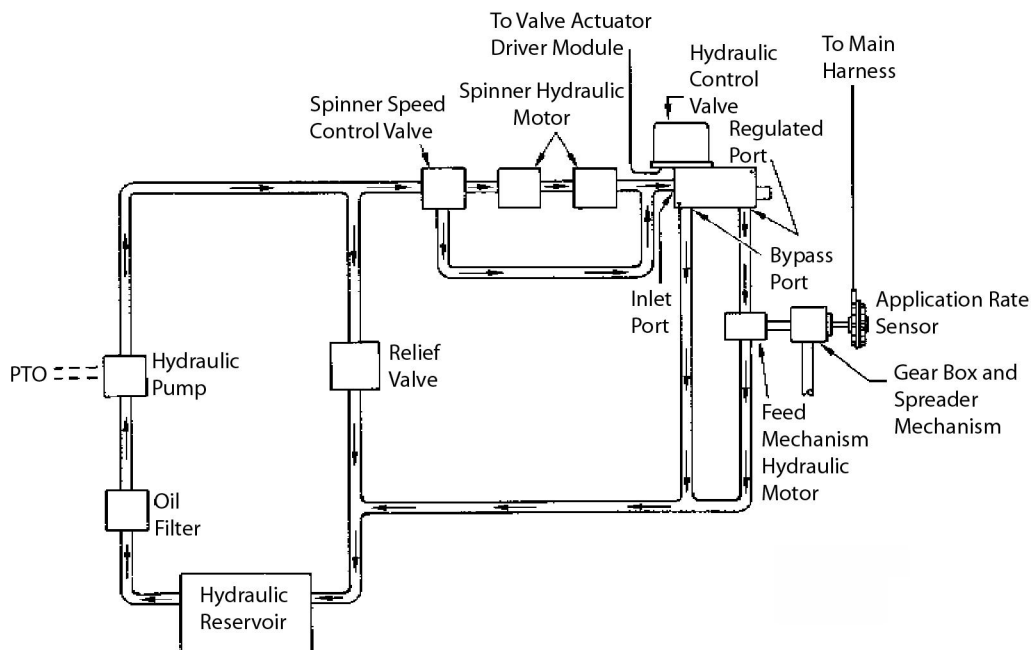
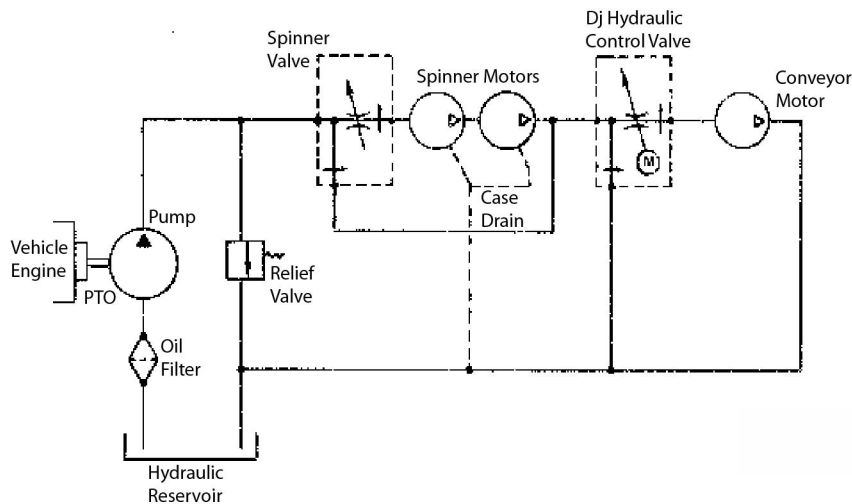


Figure 3

Hydraulic Circuit of Fixed Displacement Hydraulic Pump System



INSTALLATION INSTRUCTIONS



Figure 4

Fixed Displacement Hydraulic Pump System

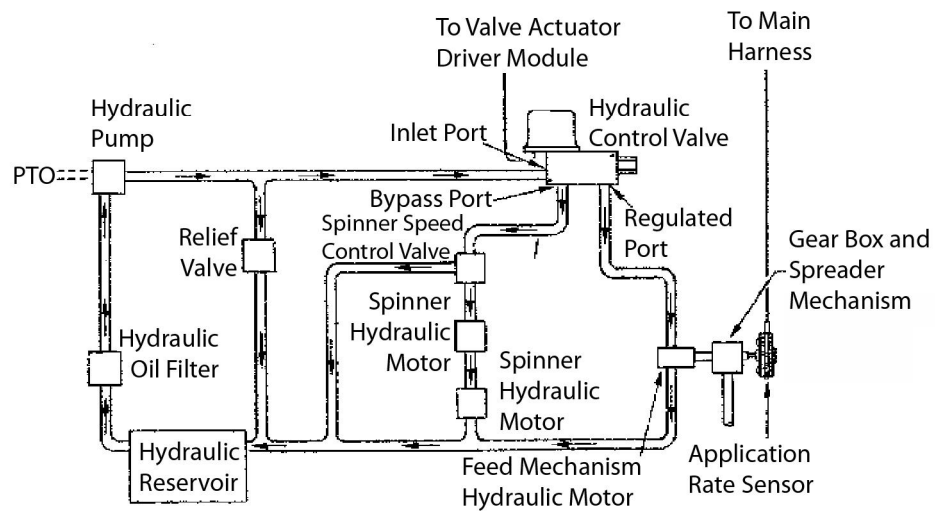
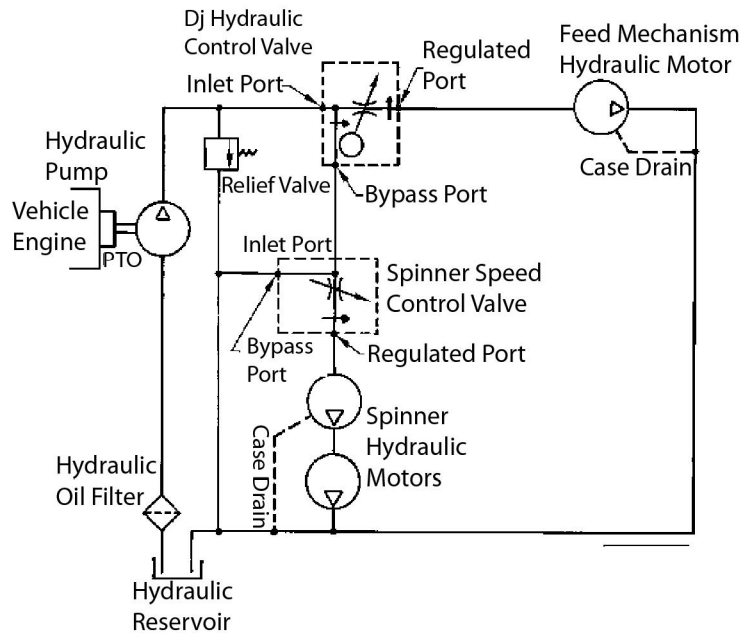


Figure 5

Hydraulic Circuit of Fixed Displacement Hydraulic Pump System



INSTALLATION INSTRUCTIONS



Figure 6

Variable Displacement Hydraulic Pump System

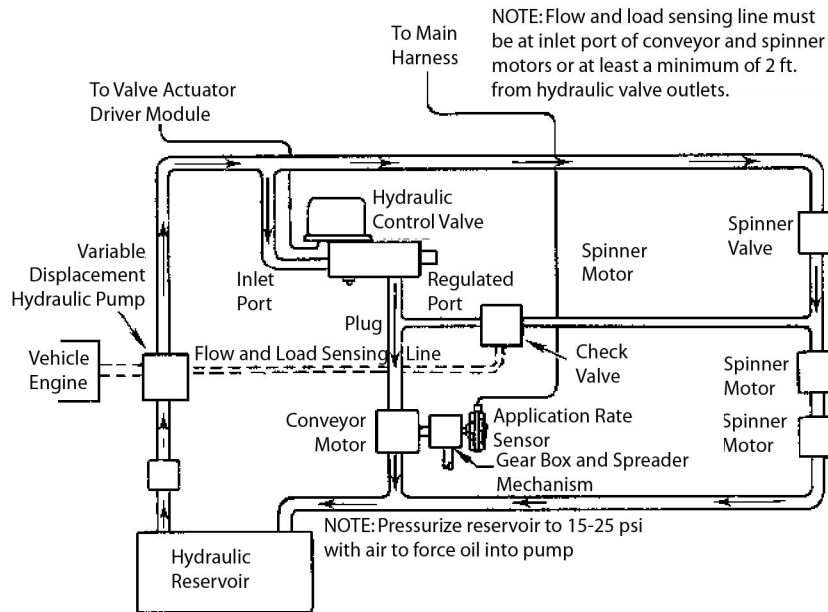
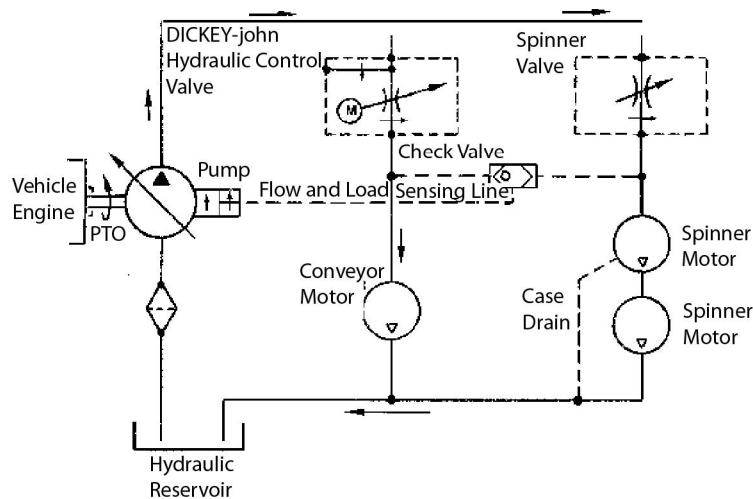


Figure 7

Hydraulic Circuit of Variable Displacement Hydraulic Pump System

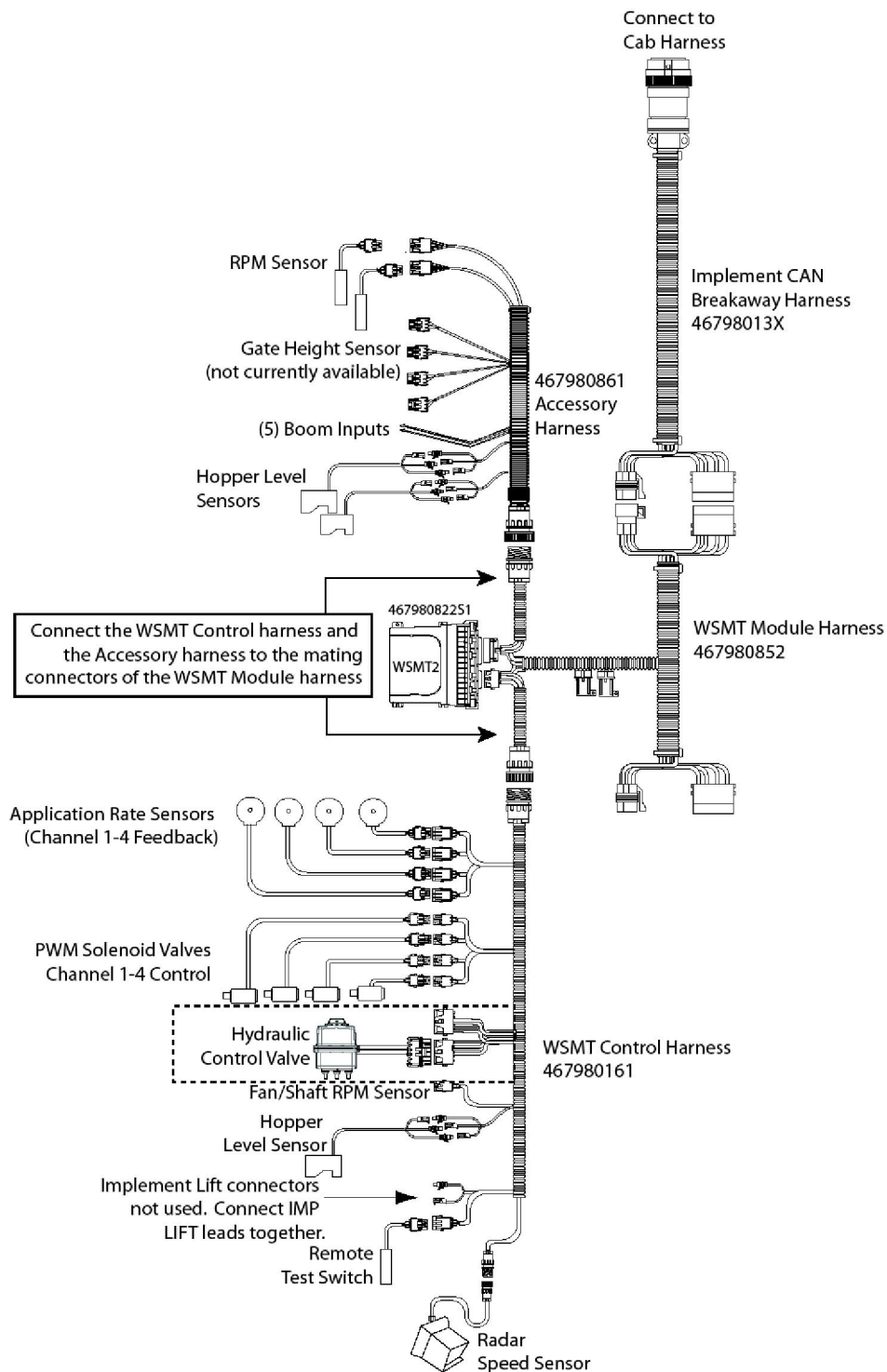


INSTALLATION INSTRUCTIONS



Figure 8

Harnessing and Hydraulic Control Valve Location



INSTALLATION INSTRUCTIONS

